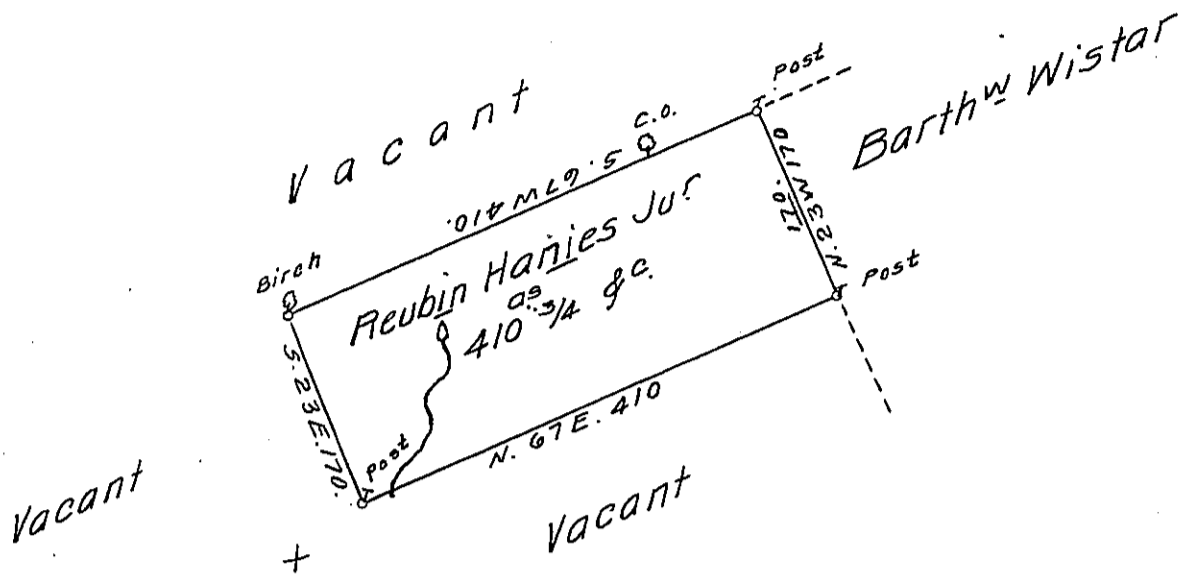


Butler -
Luzerne.



A Draft of a tract of land Called — Situate in the County of
Luzerne, containing four hundred and ten Acres ³/₄ & Allow-
ance. Surveyed for Reubin Haines Jr the 25th day of May 1793
by Virtue of a Warrant dated the 25th day of March 1793.

To

by

Daniel Brodhead Esq^r }
Surv^r Gen^l }

W^m Gray D. S.

IN TESTIMONY that the above is a copy of the original remaining on file in
the Department of Internal Affairs of Pennsylvania, made
conformably to an Act of Assembly approved the 16th day of
February, 1833, I have hereunto set my Hand and caused
the Seal of said Department to be affixed at Harrisburg,
this seventeenth day of April 1911.

Henry Horner
Secretary of Internal Affairs.